



Cambridge International AS & A Level

GEOGRAPHY

9696/31

Paper 3 Advanced Physical Geography Options

October/November 2021

INSERT

1 hour 30 minutes

INFORMATION

- This insert contains all the resources referred to in the questions.
- You may annotate this insert and use the blank spaces for planning. **Do not write your answers** on the insert.



This document has **8** pages. Any blank pages are indicated.

Fig. 1.1 for Question 1

Vegetation in a seasonally humid tropical (savanna) ecosystem



Fig. 4.1 for Question 4

Total erosion along the Holderness coastline, UK, 2003–2017

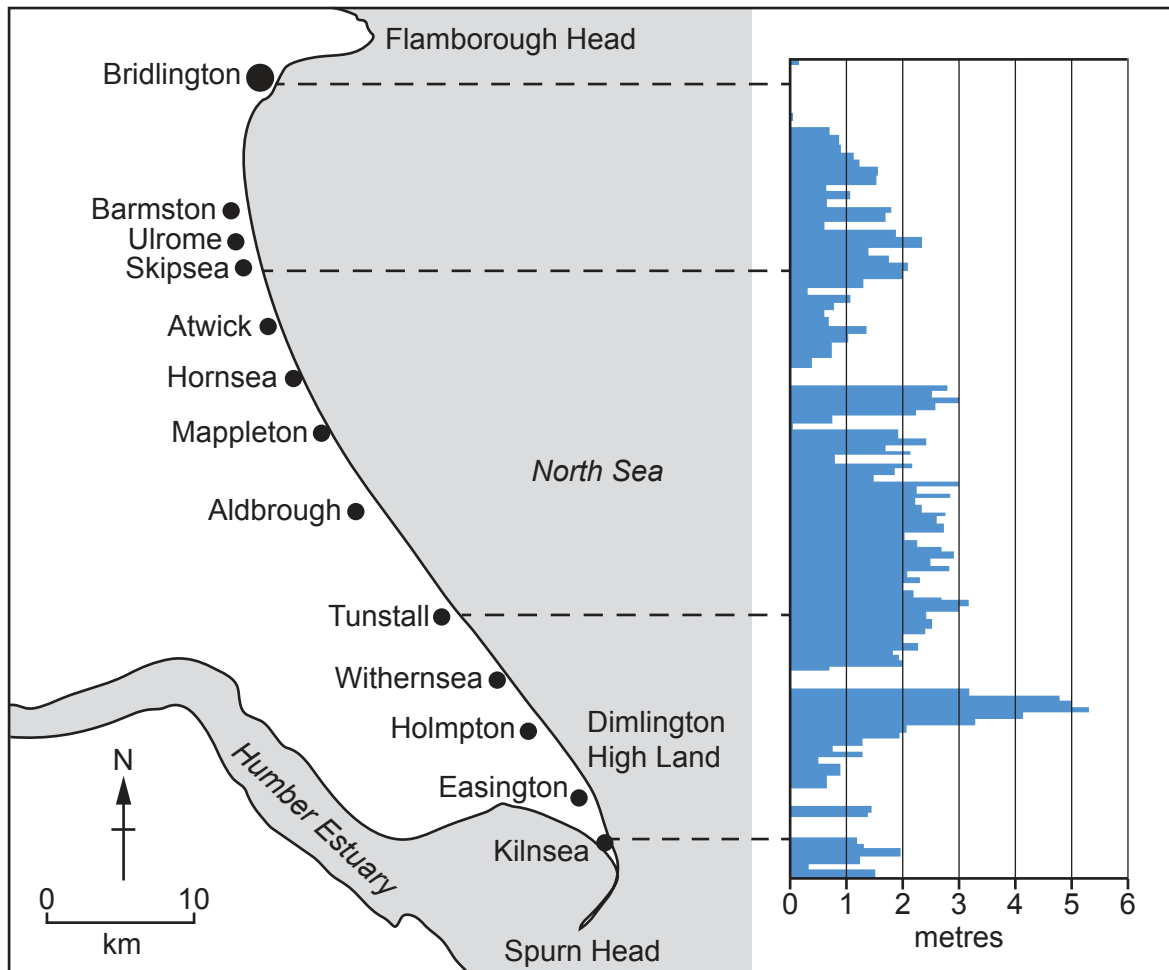
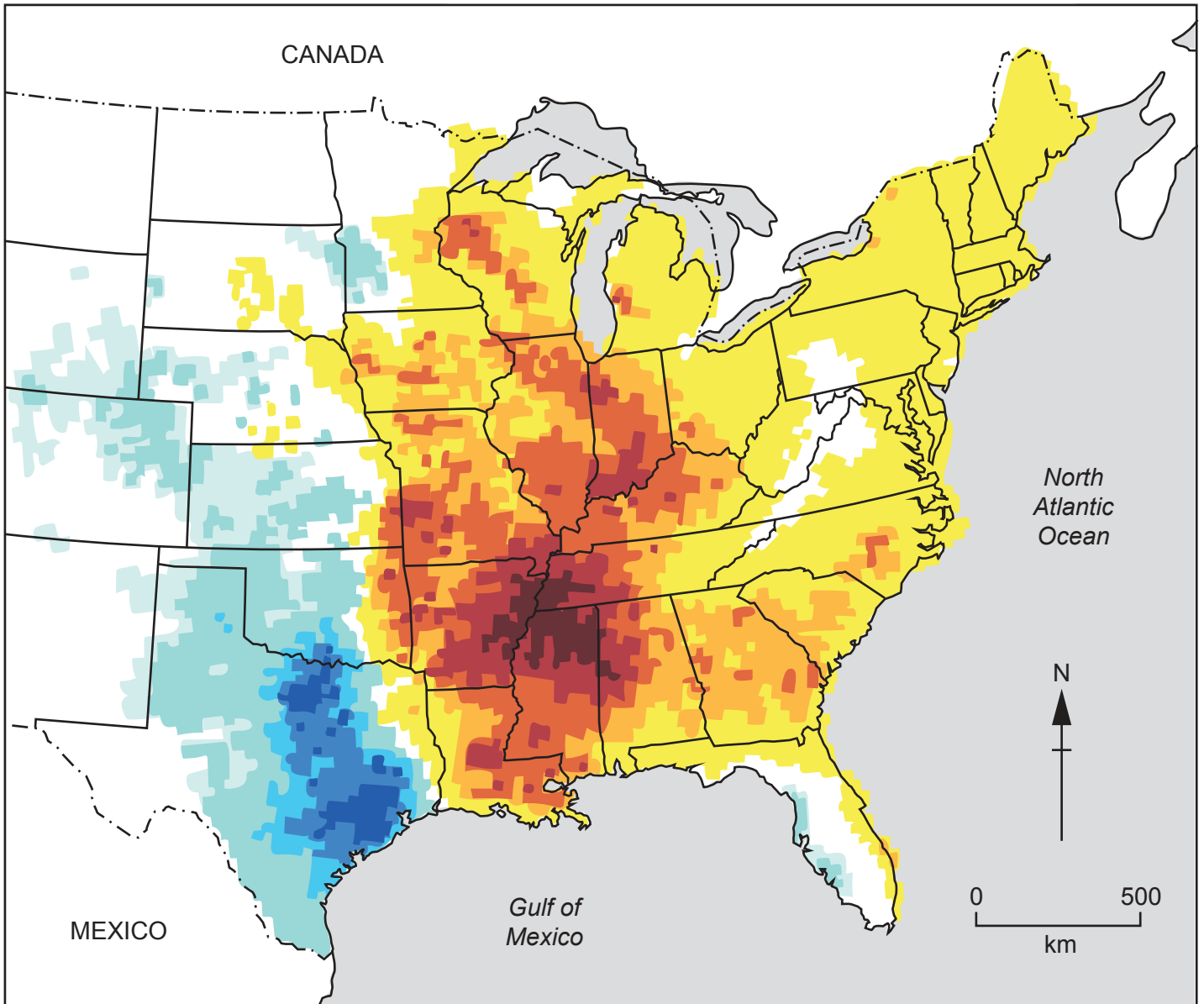


Fig. 7.1 for Question 7

Trends in frequency of tornadoes in part of the USA



- Key**
- state boundary
 - - - - international boundary

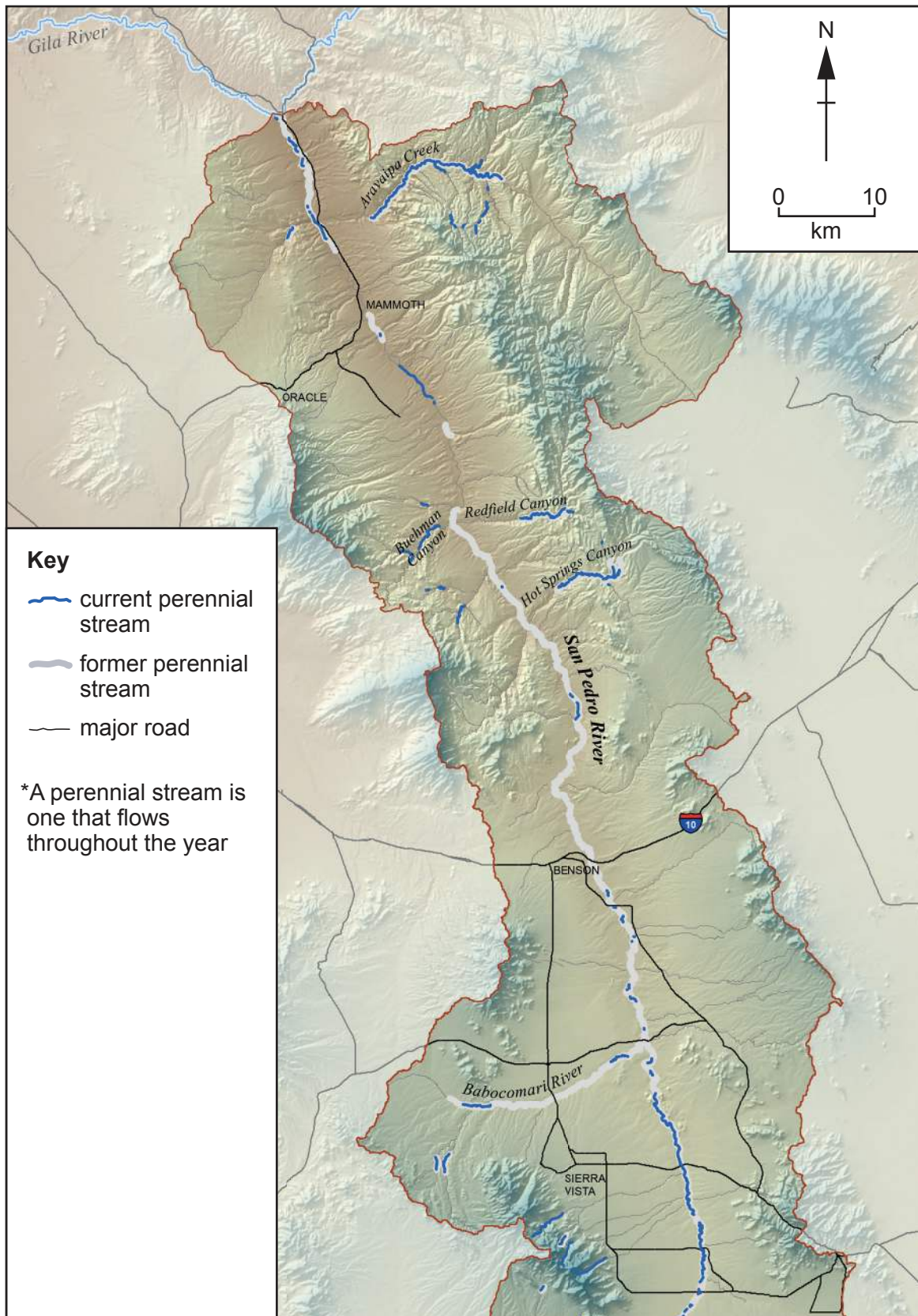
Fig. 7.2 for Question 7

The names of the states shown in Fig. 7.1



Fig. 10.1 for Question 10

Current and former perennial streams* of the San Pedro River, Arizona, USA



BLANK PAGE

The boundaries and names shown, the designations used and the presentation of material on any maps contained in this question paper/insert do not imply official endorsement or acceptance by Cambridge Assessment International Education concerning the legal status of any country, territory, or area or any of its authorities, or of the delimitation of its frontiers or boundaries.

Permission to reproduce items where third-party owned material protected by copyright is included has been sought and cleared where possible. Every reasonable effort has been made by the publisher (UCLES) to trace copyright holders, but if any items requiring clearance have unwittingly been included, the publisher will be pleased to make amends at the earliest possible opportunity.

To avoid the issue of disclosure of answer-related information to candidates, all copyright acknowledgements are reproduced online in the Cambridge Assessment International Education Copyright Acknowledgements Booklet. This is produced for each series of examinations and is freely available to download at www.cambridgeinternational.org after the live examination series.

Cambridge Assessment International Education is part of the Cambridge Assessment Group. Cambridge Assessment is the brand name of the University of Cambridge Local Examinations Syndicate (UCLES), which itself is a department of the University of Cambridge.